

21

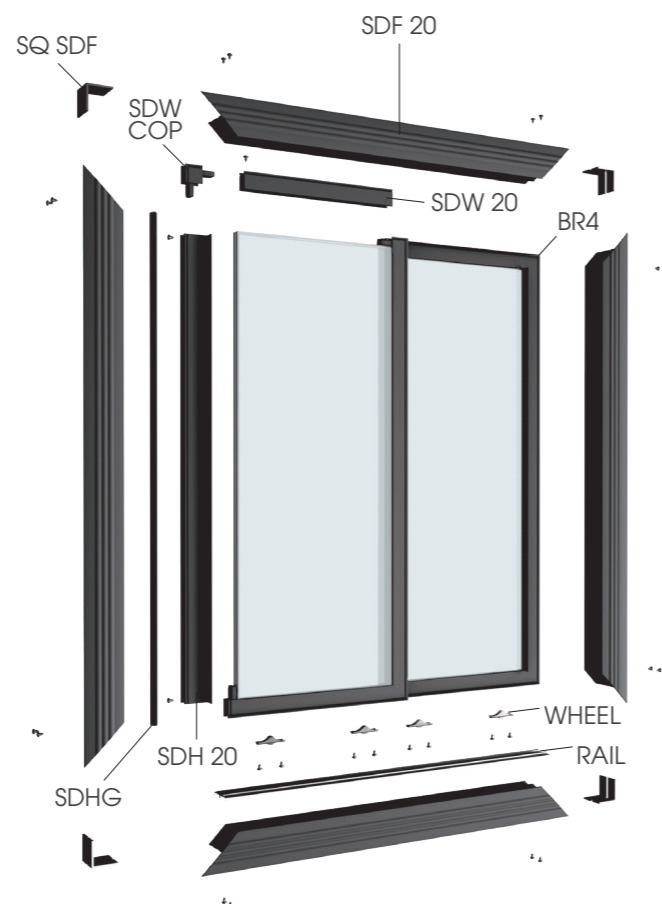
WHEEL SYSTEM

Complete system for sliding glass doors of refrigerated displays. Shockproof PVC profiles with accessories for insulation and energy saving. Lower rail for easy door sliding.

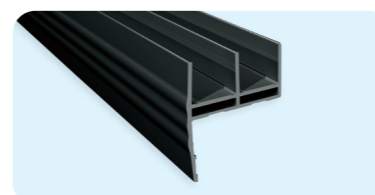
Sistema completo per porte scorrevoli in vetro di banchi frigo. Profili in PVC antiurto con accessori per isolamento e risparmio energetico. Binario inferiore per facile scorrimento.

Système complet pour portes coulissantes en verre de vitrines frigorifiques. Profils PVC anti-choc avec accessoires pour isolation et économie d'énergie. Rail inférieur pour un coulissement facile.

Sistema completo para puertas correderas de vidrio en vitrinas frigoríficas. Perfiles de PVC anti-impacto con accesorios para aislamiento y ahorro energético. Carril inferior para fácil deslizamiento.

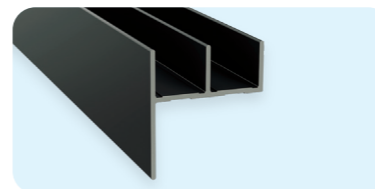
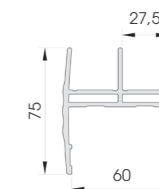


Wheel System



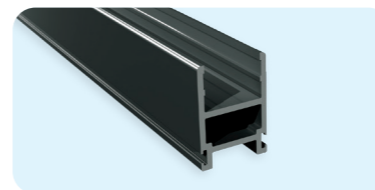
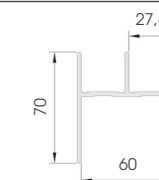
SDF 20

Length **4.000 mm**
Packing **5 pcs / box**
Colour **D**



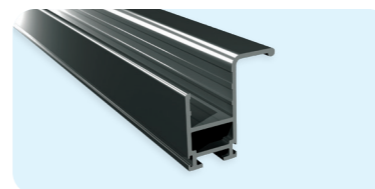
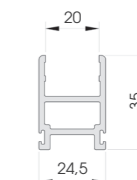
SDF 20 SHORT

Length **4.000 mm**
Packing **5 pcs / box**
Colour **D**



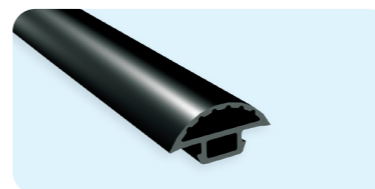
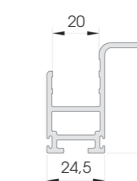
SDW 20

Length **4.000 mm**
Packing **20 pcs / box**
Colour **D**



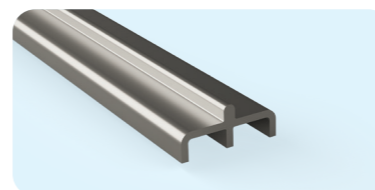
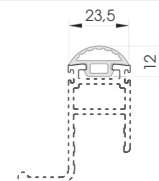
SDH 20

Length **4.000 mm**
Packing **12 pcs / box**
Colour **D**



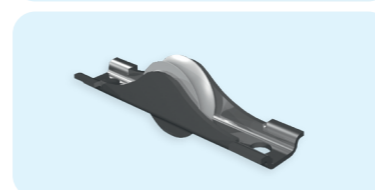
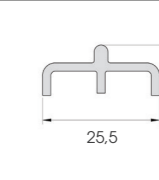
SDHG

Packing **60 mt reel**
Colour **D**



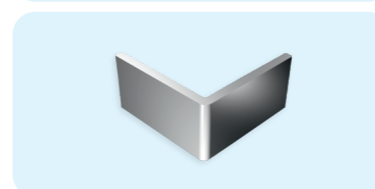
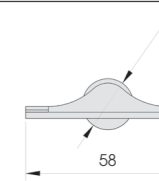
RAIL 2

Material **aluminium**
Length **3.000 mm**
Packing **10 pcs / bundle**



WHEEL

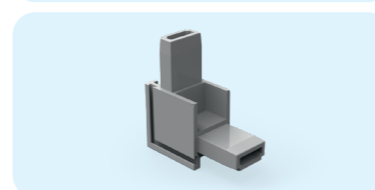
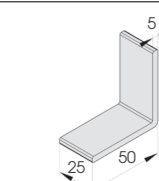
Material **steel**
Packing **100 pcs / box**



SQ SDF

To install with SDF

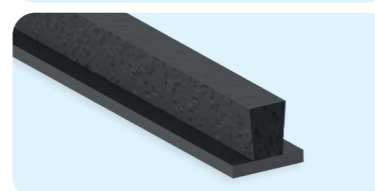
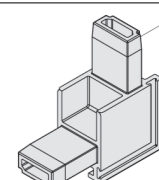
Material **aluminium**
Packing **100 pcs / box**



SDW COP

To install with SDW 20 and SDH 20

Packing **100 pcs / box**
Colour **D**



BR 4.5
BR 9

Packing **BR 4.5 1 pcs / reel L 700 mt**
BR 9 1 pcs / reel L 350 mt
Colour **D**

